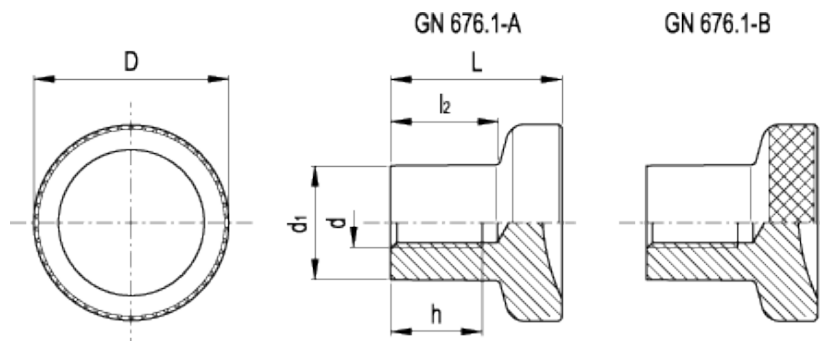


GN 676.1

Knobs



technical informations

Material

Black-oxide steel.

- Execution A: plain, rim.
- Execution B: knurled, rim.

Assembly

Tapped blind hole.

Ergonomy and design

When used as a push-pull button, the thumb rests naturally on the concave front surface making it easier to grip the knob. The slight knurling of the rim (execution B) makes tightening or clamping operations easier.

Standard Elements	Main dimensions				Mounting hole		Weight
Description	D	L	d ₁	l ₂	d	h	g
GN 676.1-21-M4-A	21	18	12.5	10.5	M4	10	26
GN 676.1-21-M4-B	21	18	12.5	10.5	M4	10	26
GN 676.1-21-M5-A	21	18	12.5	10.5	M5	10	26
GN 676.1-21-M5-B	21	18	12.5	10.5	M5	10	26

GN 676.1-25-M6-A	25	22.5	14.5	14	M6	12	42
GN 676.1-25-M6-B	25	22.5	14.5	14	M6	12	42
GN 676.1-25-M8-A	25	22.5	14.5	14	M8	12	42
GN 676.1-25-M8-B	25	22.5	14.5	14	M8	12	42
GN 676.1-31-M8-A	31	27	18.5	17	M8	15	75
GN 676.1-31-M8-B	31	27	18.5	17	M8	15	75
GN 676.1-31-M10-A	31	27	18.5	17	M10	17	75
GN 676.1-31-M10-B	31	27	18.5	17	M10	17	75



STANDARD MACHINE ELEMENTS WORLDWIDE